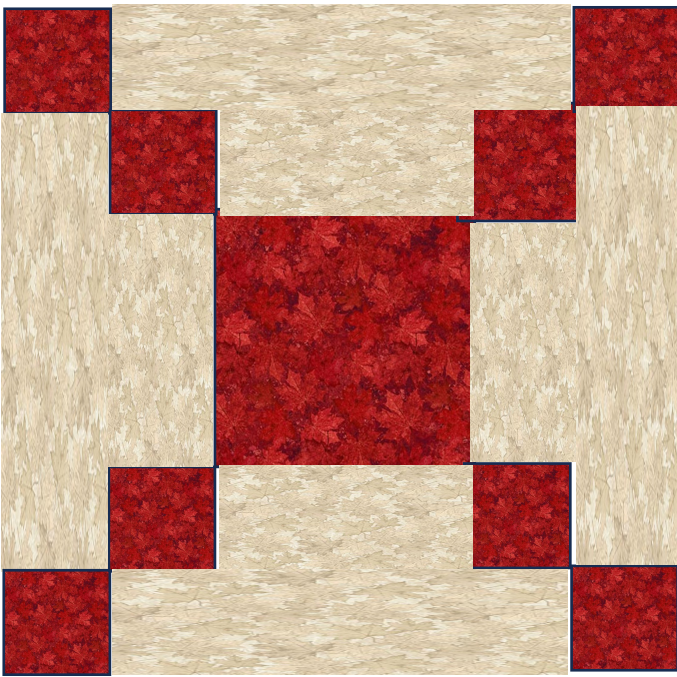




# 2024 Connections Block

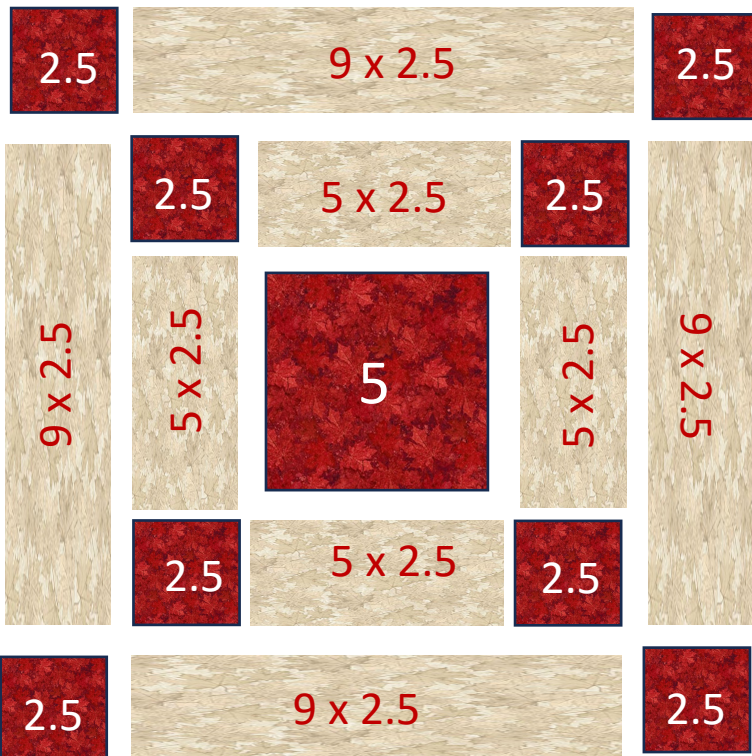


*Quilt in photo made by David Thornhill & quilted by Lisa Compton.  
Fabrics used are Oh Canada By Deborah Edwards Northcott Studio*



13 x 13 Block

# 2024 Connections Block



Approximate Fabric  
Requirements:  
(Generous)

- Red 1.25 Meters
- Beige 2.25 Meters
- Maple Leaf Fabric 2.25
- Binding choice
- 8 Strips of 2.5 inches  
(.6 meter)

\*unfinished size

*If you wish to make your blocks by sewing strips, the directions are below.*

*The amount of strips cut will give you a few more blocks than needed for one quilt but will allow you to save time by sewing strips versus individual pieces for each block*

Cut Three Red 5 inch by Width of Fabric (WOF) Strips

Cut Twelve Red 2.5 by WOF Strips

Cut Six Beige 2.5 inch by WOF Strips

Cut Three Beige 5 inch by WOF Strips

Cut Six Beige 9 inch by WOF Strips

Three



5 inches  
x WOF

Twelve



2.5 inches  
X WOF

Six



2.5 inches  
X WOF

Three



5 inches  
X WOF

Six



9 inches  
X WOF



Cut Seventeen  
13 inch x 13 inch blocks

Sew a 2.5 inch beige x WOF on each Side Of the 5 x WOF Red Strips



Sub Cut into 5 inch sections  
\*These will be Section A



Sew a 2.5 inch red x WOF on each Side of the 5 x WOF Beige Strips



Sub Cut into 2.5 inch sections  
\*These will be Section B



Sub Cut THREE of the 9 inch x WOF into 2.5 inch sections

\*These will be Section C



Sew a 2.5 inch red x WOF on each side of THREE of the 9 inch x WOF Beige Strips



Sub Cut into 2.5 inch sections

\*These will be Section D

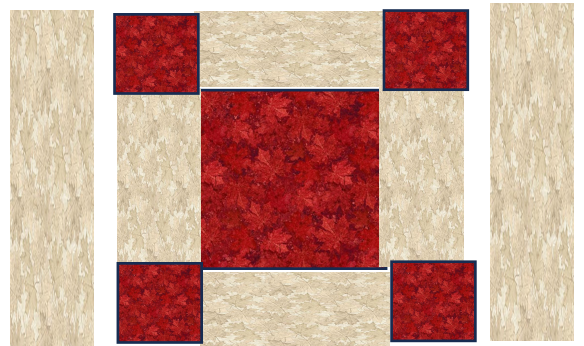


You will need 18 Connections Blocks to make the quilt

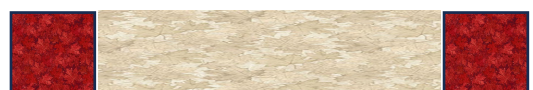
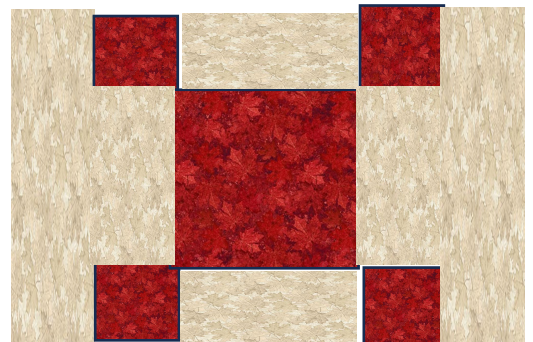
Sew Section A together with two section B

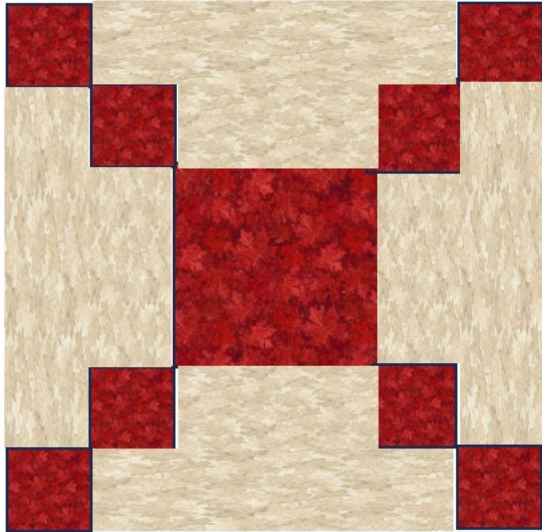


Add two Section C



Add two Section D





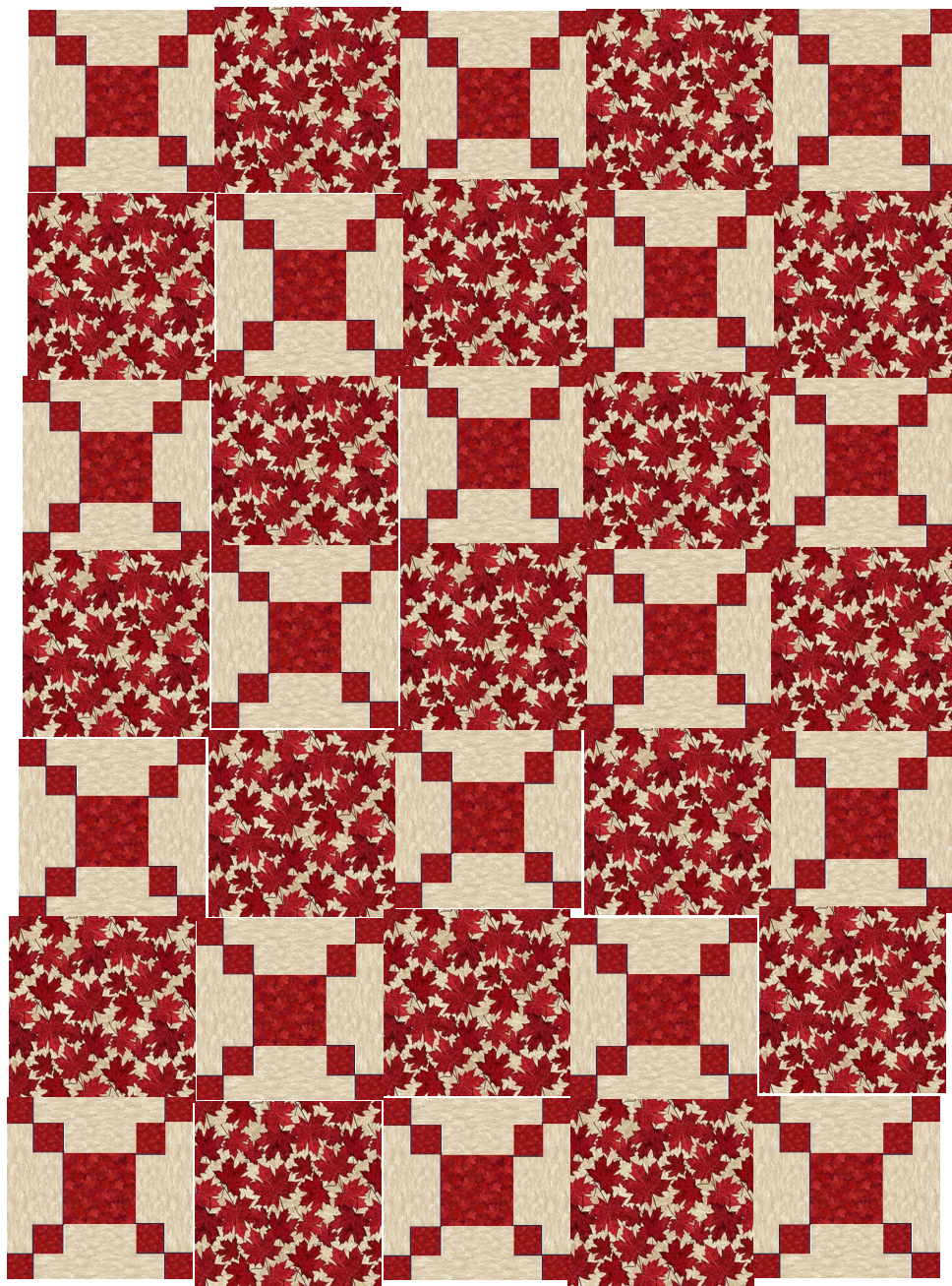
Complete Eighteen  
"Connections Block"

13 x 13 Block



Seventeen  
13 inch x 13 inch  
blocks

13 x 13 Block



5 Blocks

X

7 Blocks

Layout





An idea if you want to add borders...